

3 Bedroom Duplex A

Unit Area: 385.67 Sqm (4,152 Sqft) | Balcony Area: 64.03 Sqm (690 Sqft) | Total Area: 449.70 Sqm (4,842 Sqft)

1-Measurements are indicative 'finish to finish' in Metric & Imperial excluding construction tolerance. 2-Plot/unit dimensions may vary from brochure, and unit types/plans may exist as mirrored versions; 3-All images used are for illustrative purposes only. 4-Unless stated otherwise, all fittings and interior decorative items shown are for illustrative purposes only. 5-The developer reserves the right to make alterations, at its absolute discretion, without any liability whatsoever up to the final 'as built' status.

4 Bedroom A

Unit Area: 313.86 Sqm (3,379 Sqft) | Balcony Area: 90.53 Sqm (975 Sqft) | Total Area: 404.39 Sqm (4,354 Sqft)

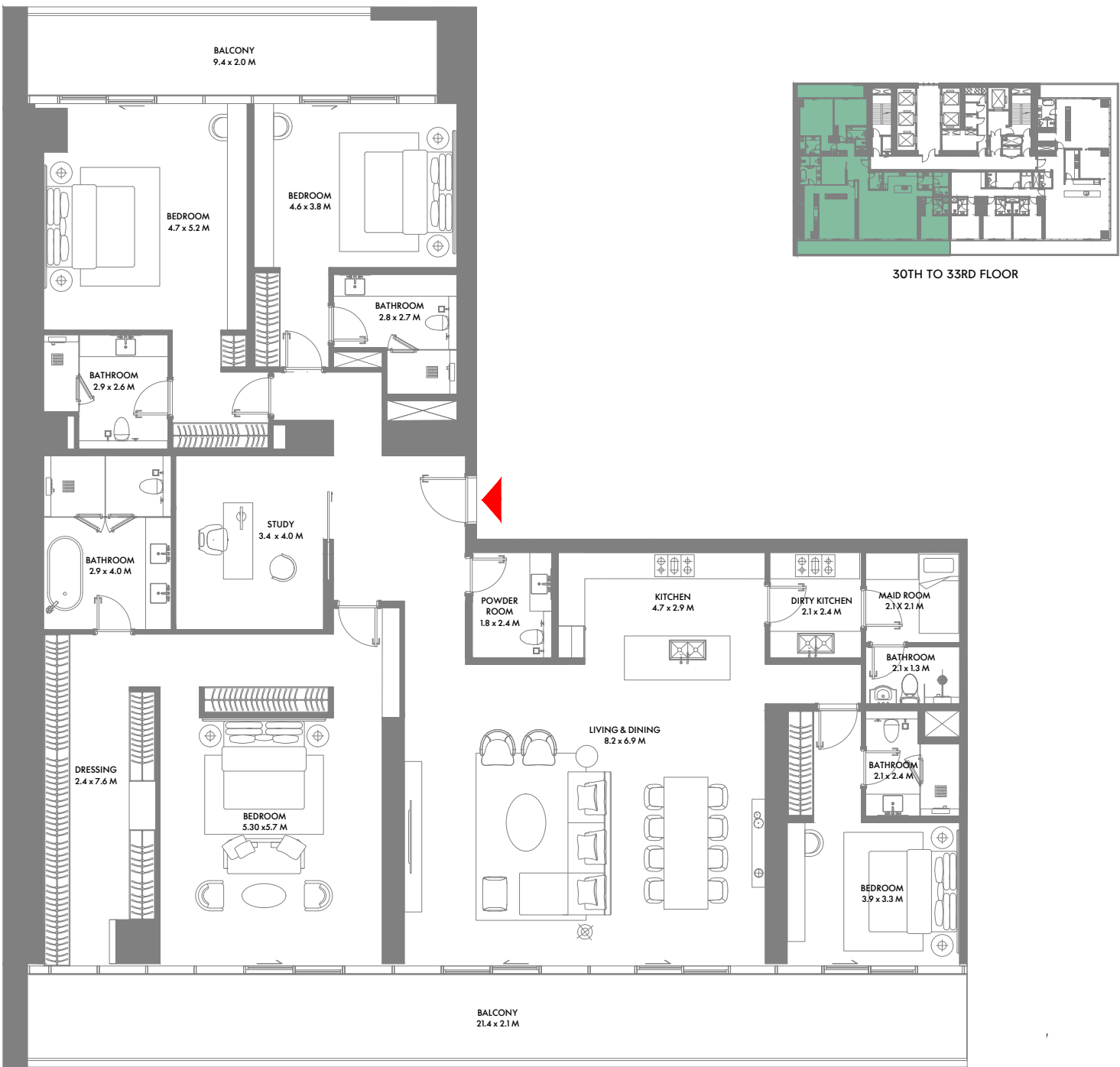
1-Measurements are indicative 'finish to finish' in Metric & Imperial excluding construction tolerance. 2-Plot/unit dimensions may vary from brochure, and unit types/plans may exist as mirrored versions; 3-All images used are for illustrative purposes only. 4-Unless stated otherwise, all fittings and interior decorative items shown are for illustrative purposes only. 5-The developer reserves the right to make alterations, at its absolute discretion, without any liability whatsoever up to the final 'as built' status.



4 Bedroom B

Unit Area: 309.98 Sqm (3,337 Sqft) | **Balcony Area:** 64.87 Sqm (699 Sqft) | **Total Area:** 374.85 Sqm (4,036 Sqft)

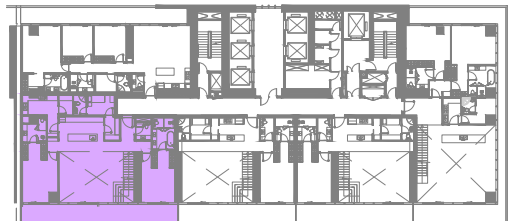
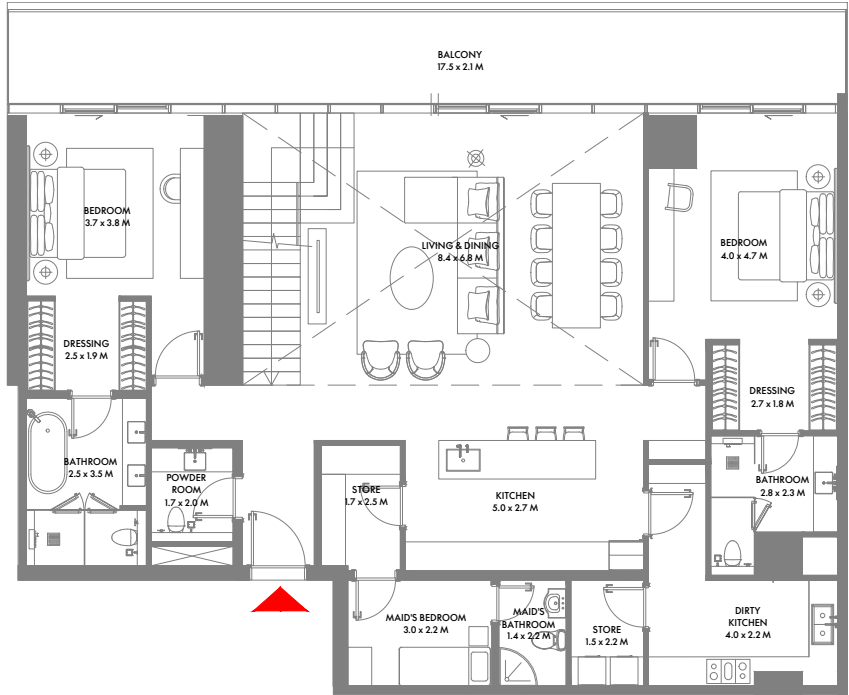
1-Measurements are indicative 'finish to finish' in Metric & Imperial excluding construction tolerance. 2-Plot/unit dimensions may vary from brochure, and unit types/plans may exist as mirrored versions; 3-All images used are for illustrative purposes only. 4-Unless stated otherwise, all fittings and interior decorative items shown are for illustrative purposes only. 5-The developer reserves the right to make alterations, at its absolute discretion, without any liability whatsoever up to the final 'as built' status.



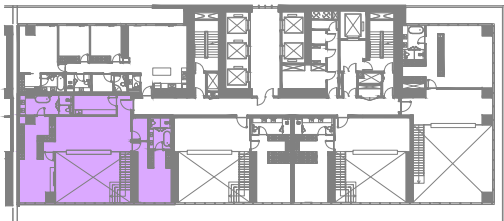
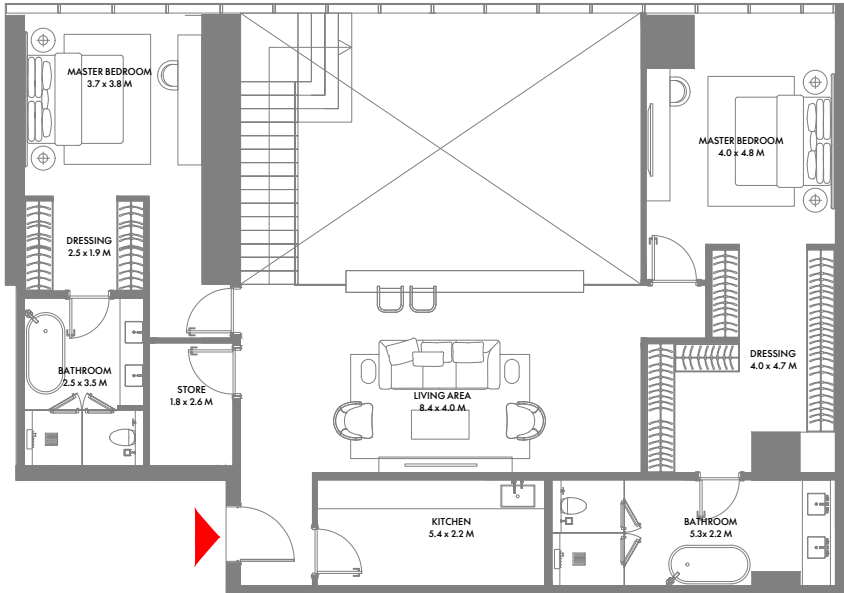
4 Bedroom C

Unit Area: 299.87 Sqm (3,228 Sqft) | **Balcony Area:** 62.96 Sqm (678 Sqft) | **Total Area:** 362.83 Sqm (3,906 Sqft)

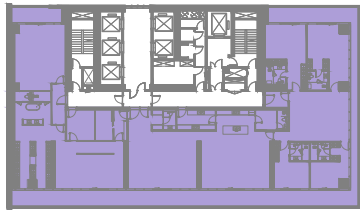
1-Measurements are indicative 'finish to finish' in Metric & Imperial excluding construction tolerance. 2-Plot/unit dimensions may vary from brochure, and unit types/plans may exist as mirrored versions; 3-All images used are for illustrative purposes only. 4-Unless stated otherwise, all fittings and interior decorative items shown are for illustrative purposes only. 5-The developer reserves the right to make alterations, at its absolute discretion, without any liability whatsoever up to the final 'as built' status.



11TH FLOOR



12TH FLOOR



37TH TO 40TH FLOOR

4 Bedroom Duplex A

Unit Area: 389.28 Sqm (4,191 Sqft) | Balcony Area: 35.58 Sqm (383 Sqft) | Total Area: 424.86 Sqm (4,574 Sqft)

5 Bedroom Penthouse

Unit Area: 557.48 Sqm (6,001 Sqft) | Balcony Area: 140.28 Sqm (1,510 Sqft) | Total Area: 697.76 Sqm (7,511 Sqft)

1-Measurements are indicative 'finish to finish' in Metric & Imperial excluding construction tolerance. 2-Plot/unit dimensions may vary from brochure, and unit types/plans may exist as mirrored versions; 3-All images used are for illustrative purposes only. 4-Unless stated otherwise, all fittings and interior decorative items shown are for illustrative purposes only. 5-The developer reserves the right to make alterations, at its absolute discretion, without any liability whatsoever up to the final 'as built' status.

1-Measurements are indicative 'finish to finish' in Metric & Imperial excluding construction tolerance. 2-Plot/unit dimensions may vary from brochure, and unit types/plans may exist as mirrored versions; 3-All images used are for illustrative purposes only. 4-Unless stated otherwise, all fittings and interior decorative items shown are for illustrative purposes only. 5-The developer reserves the right to make alterations, at its absolute discretion, without any liability whatsoever up to the final 'as built' status.



32ND FLOOR



4 Bedroom D

Unit Area: 263.22 Sqm (2,834 Sqft) | Balcony Area: 55.33 Sqm (596 Sqft) | Total Area: 318.55 Sqm (3,430 Sqft)

1-Measurements are indicative 'finish to finish' in Metric & Imperial excluding construction tolerance. 2-Plot/unit dimensions may vary from brochure, and unit types/plans may exist as mirrored versions; 3-All images used are for illustrative purposes only. 4-Unless stated otherwise, all fittings and interior decorative items shown are for illustrative purposes only. 5-The developer reserves the right to make alterations, at its absolute discretion, without any liability whatsoever up to the final 'as built' status.

4 Bedroom E

Unit Area: 303.03 Sqm (3,262 Sqft) | Balcony Area: 90.53 Sqm (975 Sqft) | Total Area: 393.56 Sqm (4,237 Sqft)

1-Measurements are indicative 'finish to finish' in Metric & Imperial excluding construction tolerance. 2-Plot/unit dimensions may vary from brochure, and unit types/plans may exist as mirrored versions; 3-All images used are for illustrative purposes only. 4-Unless stated otherwise, all fittings and interior decorative items shown are for illustrative purposes only. 5-The developer reserves the right to make alterations, at its absolute discretion, without any liability whatsoever up to the final 'as built' status.