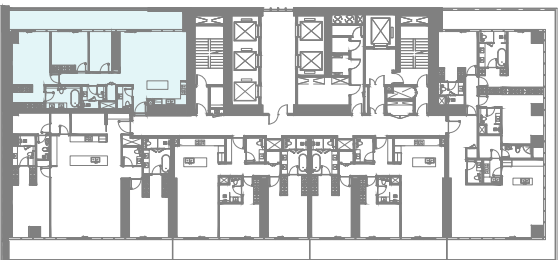
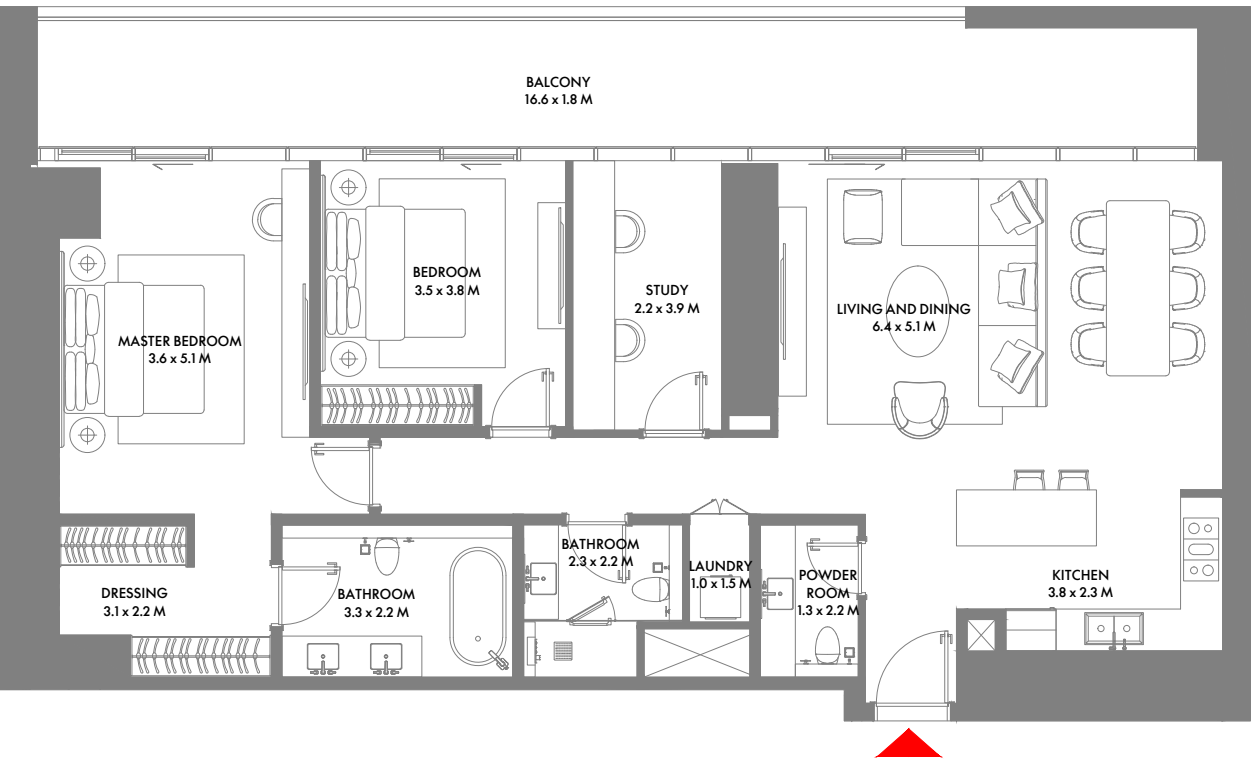


9TH , 14TH TO 27TH FLOOR

2 Bedroom A

Unit Area: 122.80 Sqm (1,322 Sqft) | **Balcony Area:** 26.58 Sqm (287 Sqft) | **Total Area:** 149.38 Sqm (1,609 Sqft)

1-Measurements are indicative 'finish to finish' in Metric & Imperial excluding construction tolerance. 2-Plot/unit dimensions may vary from brochure, and unit types/plans may exist as mirrored versions; 3-All images used are for illustrative purposes only. 4-Unless stated otherwise, all fittings and interior decorative items shown are for illustrative purposes only. 5-The developer reserves the right to make alterations, at its absolute discretion, without any liability whatsoever up to the final 'as built' status.

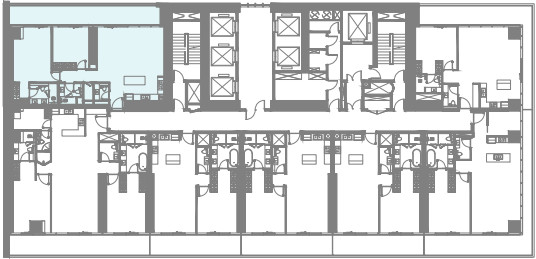
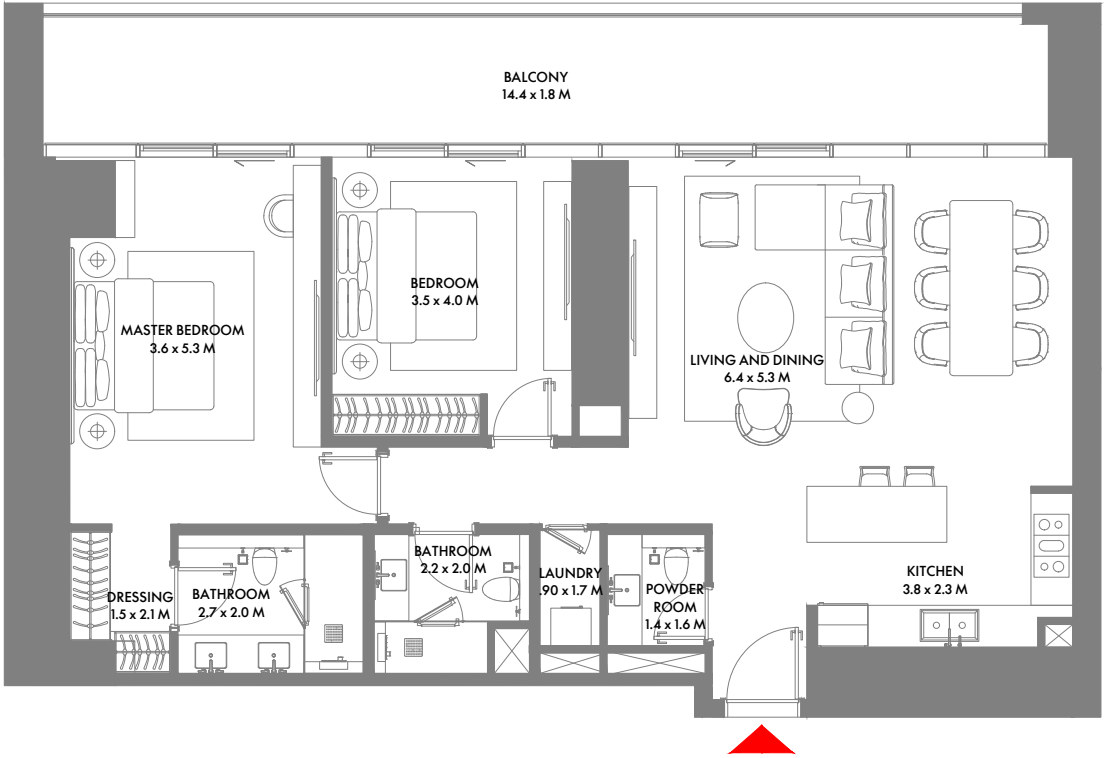


8TH & 14TH FLOOR
9TH, 14TH TO 21ST & 23RD TO 27TH FLOOR

2 Bedroom B

Unit Area: 130.19 Sqm (1,402 Sqft) | **Balcony Area:** 34.21 Sqm (369 Sqft) | **Total Area:** 164.40 Sqm (1,771 Sqft)

1-Measurements are indicative 'finish to finish' in Metric & Imperial excluding construction tolerance. 2-Plot/unit dimensions may vary from brochure, and unit types/plans may exist as mirrored versions; 3-All images used are for illustrative purposes only. 4-Unless stated otherwise, all fittings and interior decorative items shown are for illustrative purposes only. 5-The developer reserves the right to make alterations, at its absolute discretion, without any liability whatsoever up to the final 'as built' status.

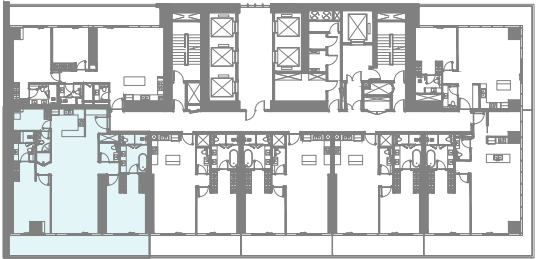
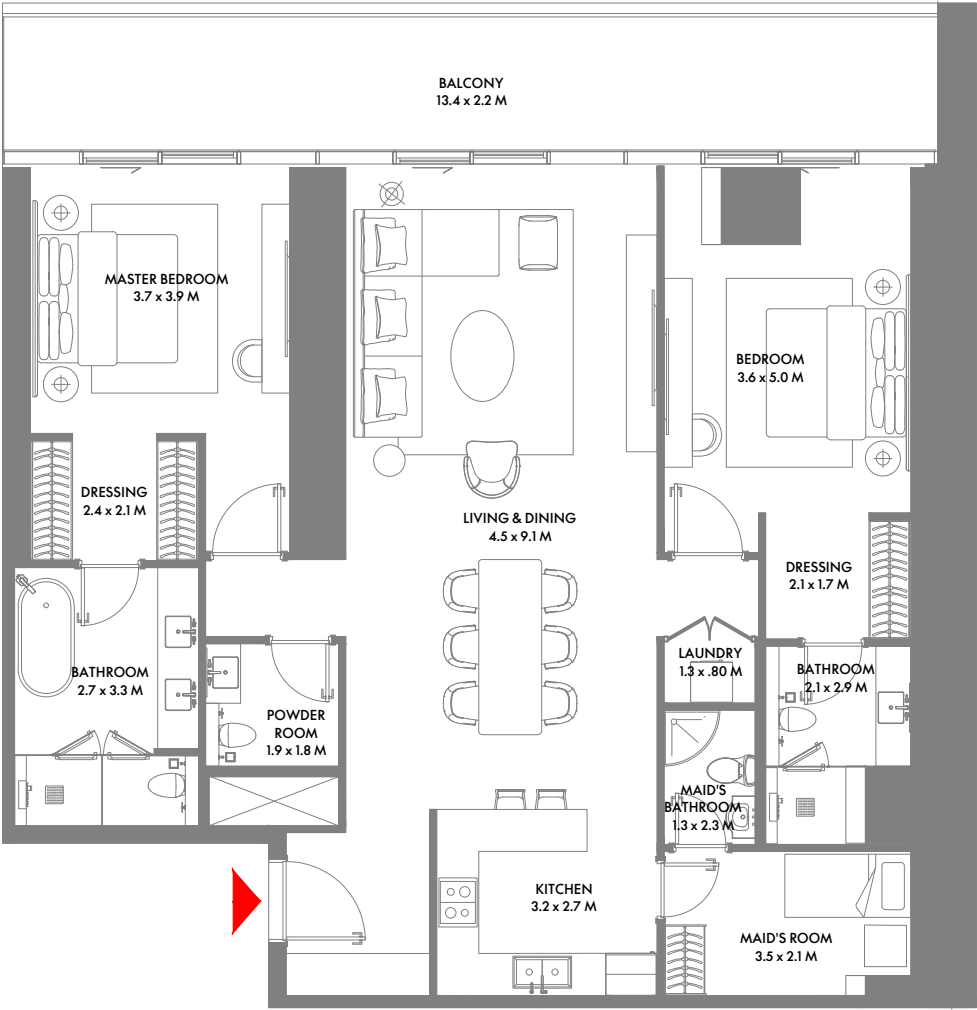


5TH TO 7TH & 15TH TO 21ST FLOOR

2 Bedroom C

Unit Area: 125.62 Sqm (1,353 Sqft) | **Balcony Area:** 32.61 Sqm (352 Sqft) | **Total Area:** 158.23 Sqm (1,705 Sqft)

1-Measurements are indicative 'finish to finish' in Metric & Imperial excluding construction tolerance. 2-Plot/unit dimensions may vary from brochure, and unit types/plans may exist as mirrored versions; 3-All images used are for illustrative purposes only. 4-Unless stated otherwise, all fittings and interior decorative items shown are for illustrative purposes only. 5-The developer reserves the right to make alterations, at its absolute discretion, without any liability whatsoever up to the final 'as built' status.

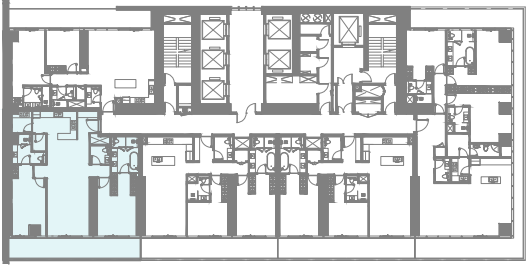
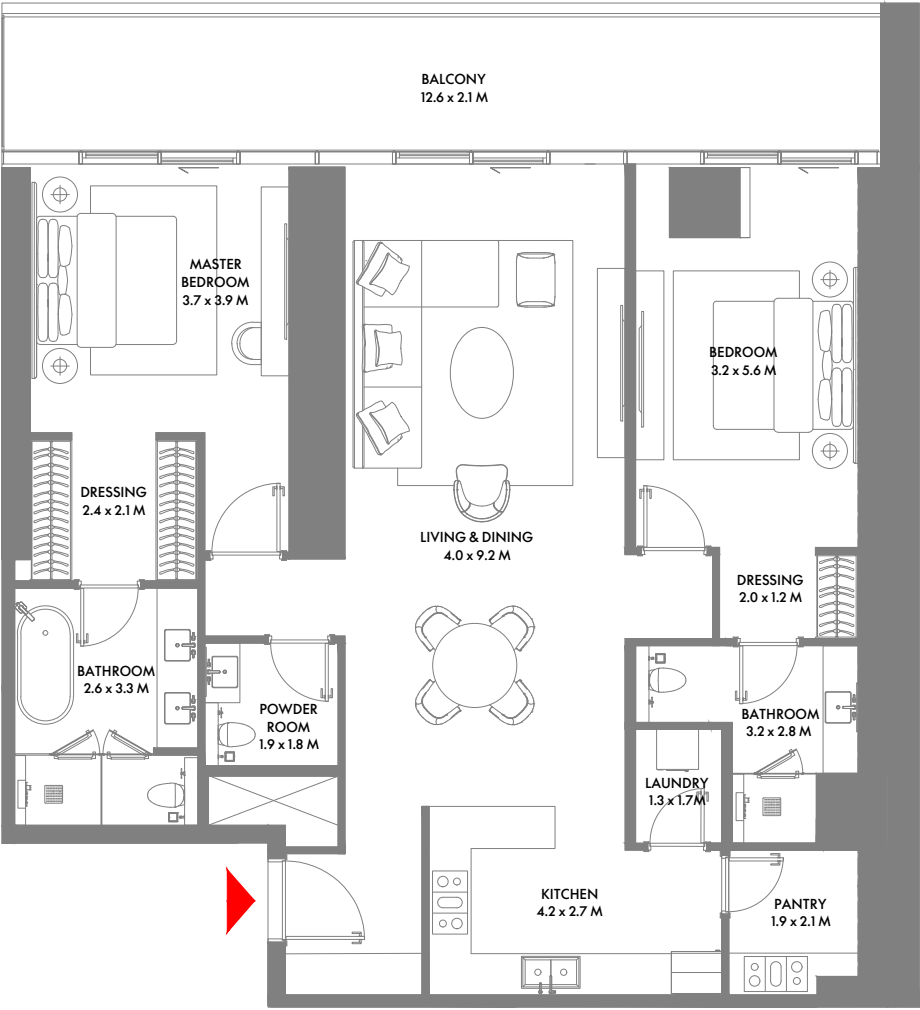


5TH TO 7TH & 15TH TO 20TH FLOOR

2 Bedroom D

Unit Area: 169.26 Sqm (1,822 Sqft) | **Balcony Area:** 30.82 Sqm (332 Sqft) | **Total Area:** 200.08 Sqm (2,154 Sqft)

1-Measurements are indicative 'finish to finish' in Metric & Imperial excluding construction tolerance. 2-Plot/unit dimensions may vary from brochure, and unit types/plans may exist as mirrored versions; 3-All images used are for illustrative purposes only. 4-Unless stated otherwise, all fittings and interior decorative items shown are for illustrative purposes only. 5-The developer reserves the right to make alterations, at its absolute discretion, without any liability whatsoever up to the final 'as built' status.

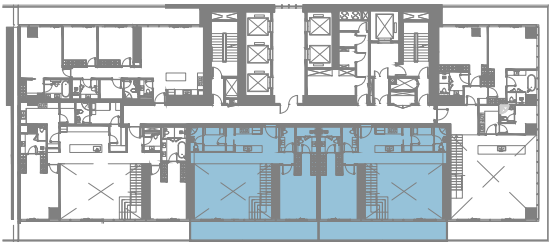
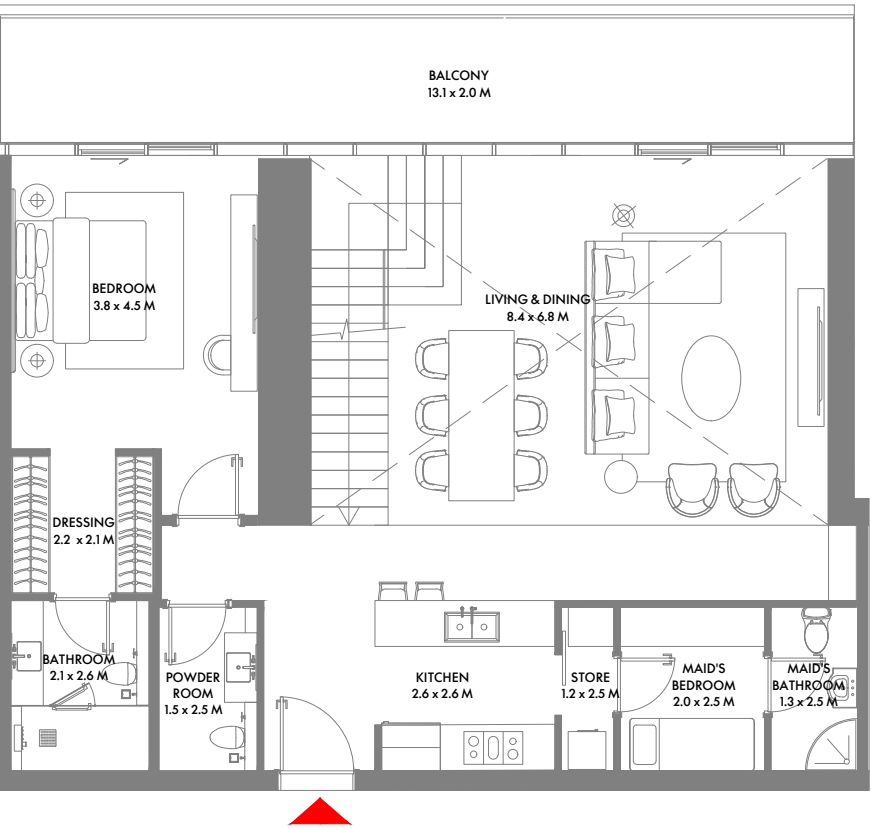


21ST FLOOR

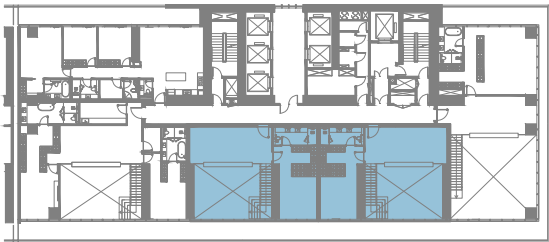
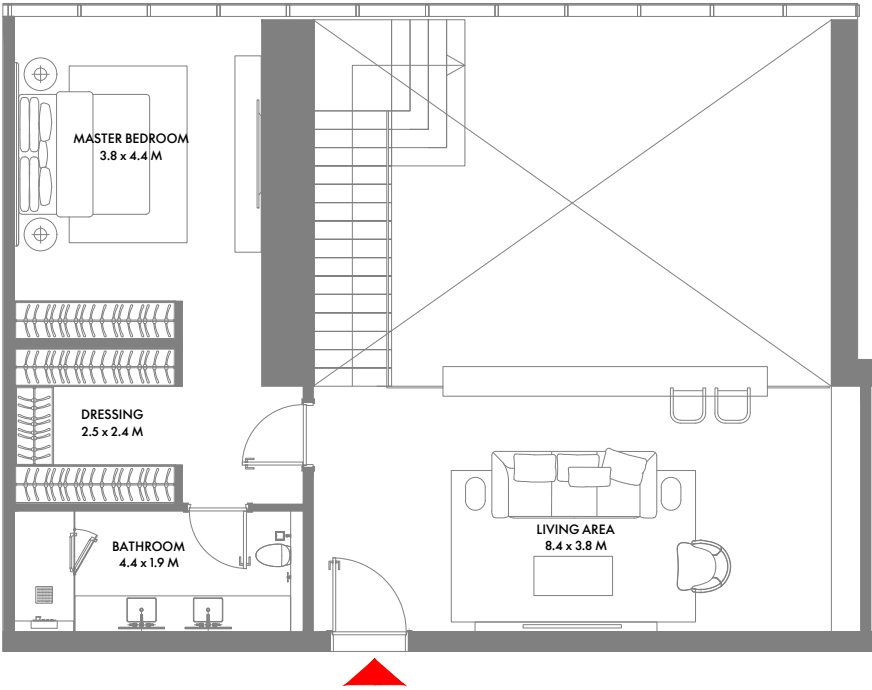
2 Bedroom I

Unit Area: 137.74 Sqm (1,483 Sqft) | **Balcony Area:** 25.52 Sqm (275 Sqft) | **Total Area:** 163.26 Sqm (1,758 Sqft)

1-Measurements are indicative 'finish to finish' in Metric & Imperial excluding construction tolerance. 2-Plot/unit dimensions may vary from brochure, and unit types/plans may exist as mirrored versions; 3-All images used are for illustrative purposes only. 4-Unless stated otherwise, all fittings and interior decorative items shown are for illustrative purposes only. 5-The developer reserves the right to make alterations, at its absolute discretion, without any liability whatsoever up to the final 'as built' status.



11TH FLOOR

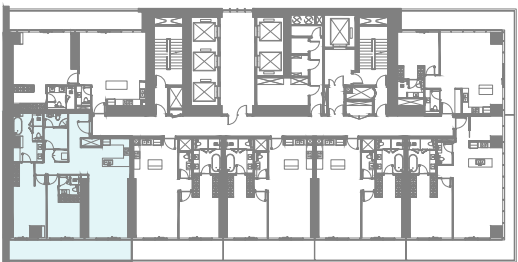
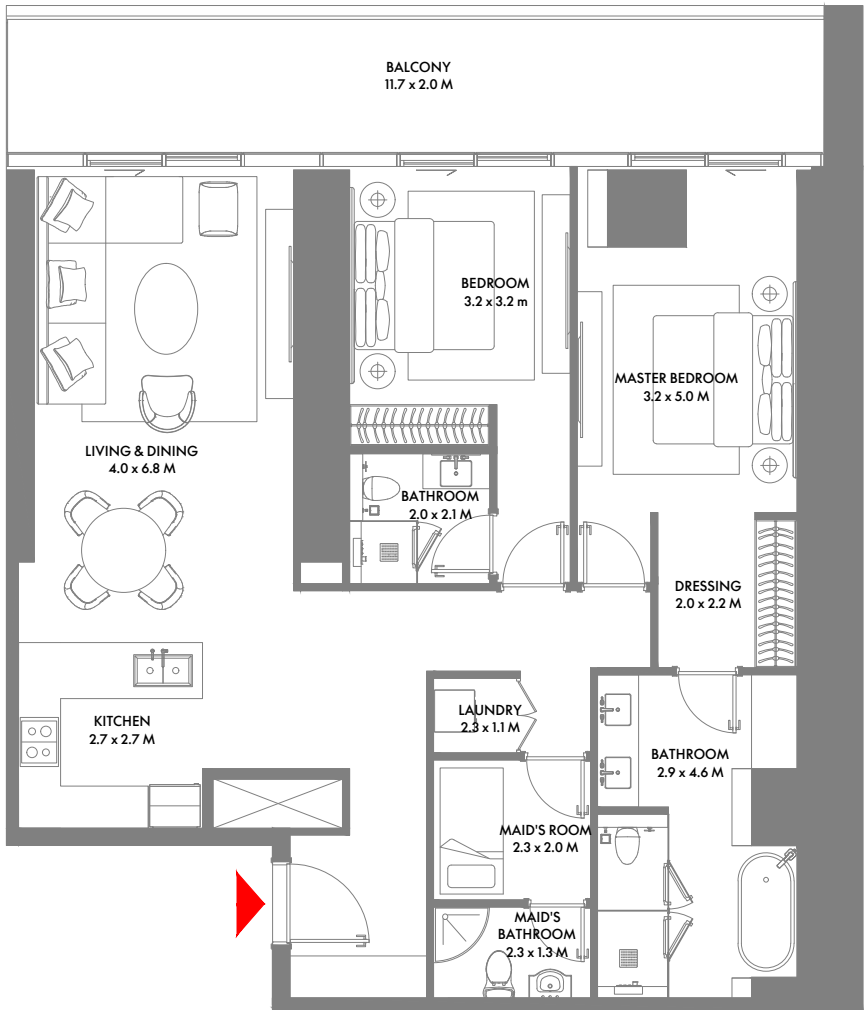


12TH FLOOR

2 Bedroom Duplex A

Unit Area: 254.67 Sqm (2,742 Sqft) | **Balcony Area:** 26.56 Sqm (286 Sqft) | **Total Area:** 281.23 Sqm (3,028 Sqft)

1-Measurements are indicative 'finish to finish' in Metric & Imperial excluding construction tolerance. 2-Plot/unit dimensions may vary from brochure, and unit types/plans may exist as mirrored versions; 3-All images used are for illustrative purposes only. 4-Unless stated otherwise, all fittings and interior decorative items shown are for illustrative purposes only. 5-The developer reserves the right to make alterations, at its absolute discretion, without any liability whatsoever up to the final 'as built' status.

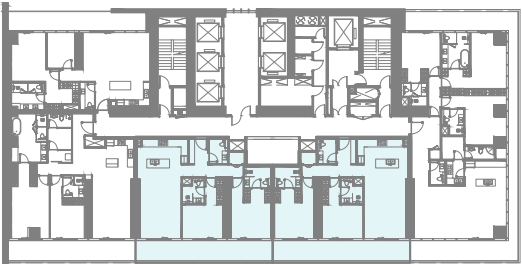
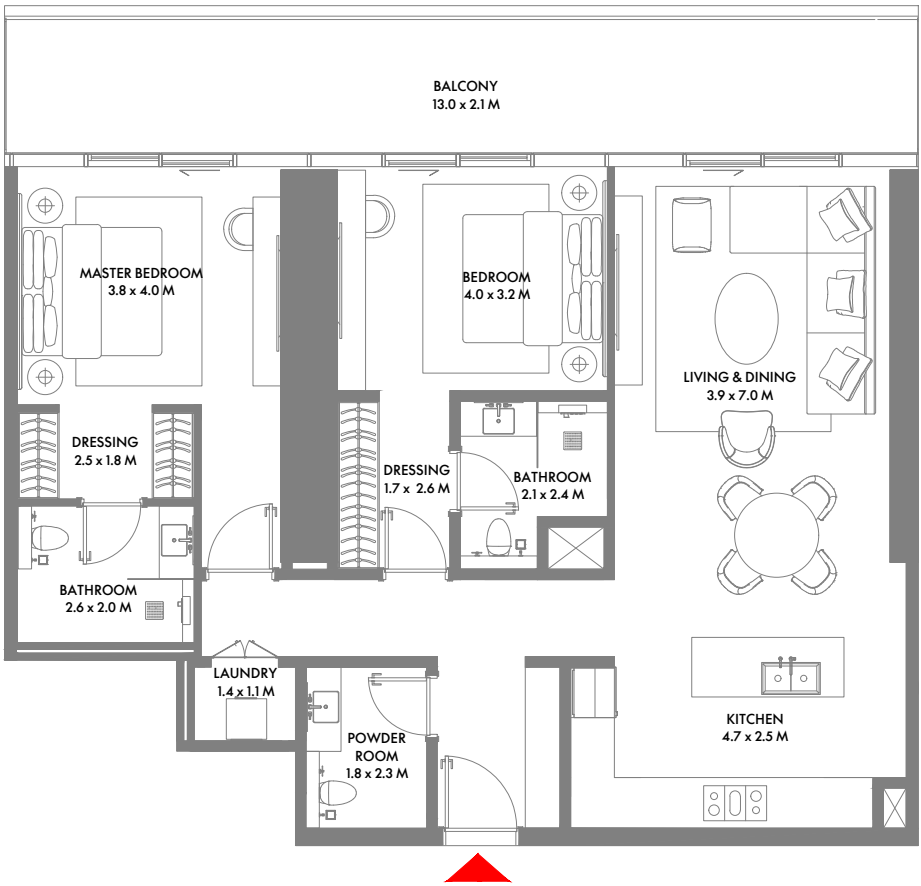


3RD & 22ND FLOOR

2 Bedroom G

Unit Area: 132.49 Sqm (1,427 Sqft) | **Balcony Area:** 24.64 Sqm (266 Sqft) | **Total Area:** 157.13 Sqm (1,693 Sqft)

1-Measurements are indicative 'finish to finish' in Metric & Imperial excluding construction tolerance. 2-Plot/unit dimensions may vary from brochure, and unit types/plans may exist as mirrored versions; 3-All images used are for illustrative purposes only. 4-Unless stated otherwise, all fittings and interior decorative items shown are for illustrative purposes only. 5-The developer reserves the right to make alterations, at its absolute discretion, without any liability whatsoever up to the final 'as built' status.

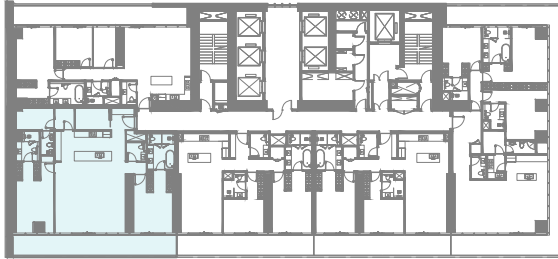
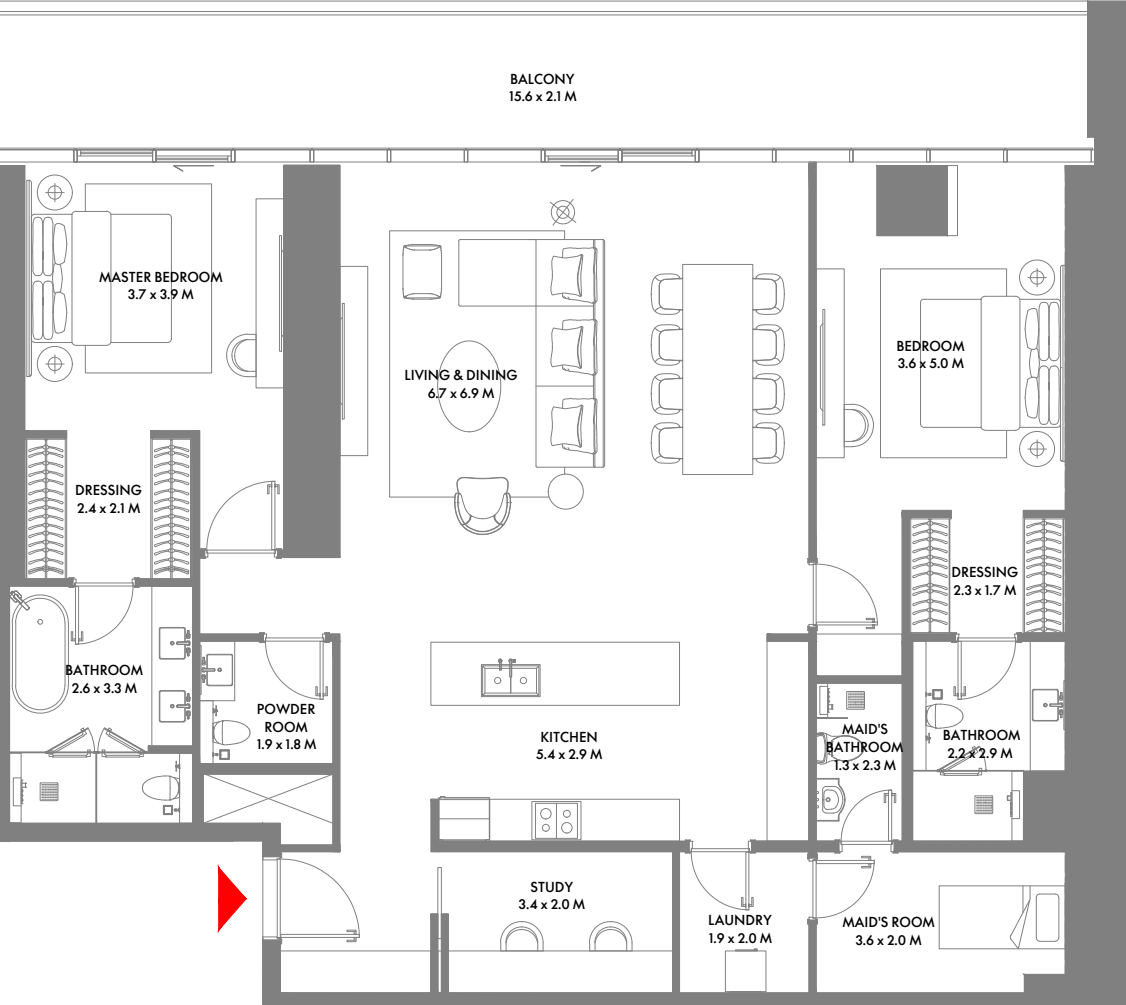


10TH & 22ND FLOOR

2 Bedroom H

Unit Area: 116.20 Sqm (1,251 Sqft) | **Balcony Area:** 26.58 Sqm (287 Sqft) | **Total Area:** 142.78 Sqm (1,538 Sqft)

1-Measurements are indicative 'finish to finish' in Metric & Imperial excluding construction tolerance. 2-Plot/unit dimensions may vary from brochure, and unit types/plans may exist as mirrored versions; 3-All images used are for illustrative purposes only. 4-Unless stated otherwise, all fittings and interior decorative items shown are for illustrative purposes only. 5-The developer reserves the right to make alterations, at its absolute discretion, without any liability whatsoever up to the final 'as built' status.

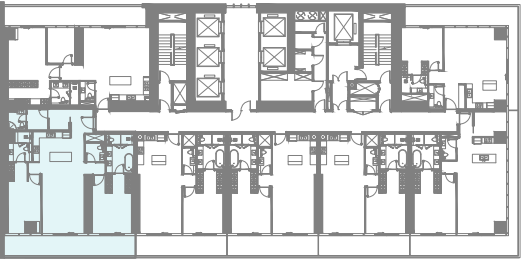
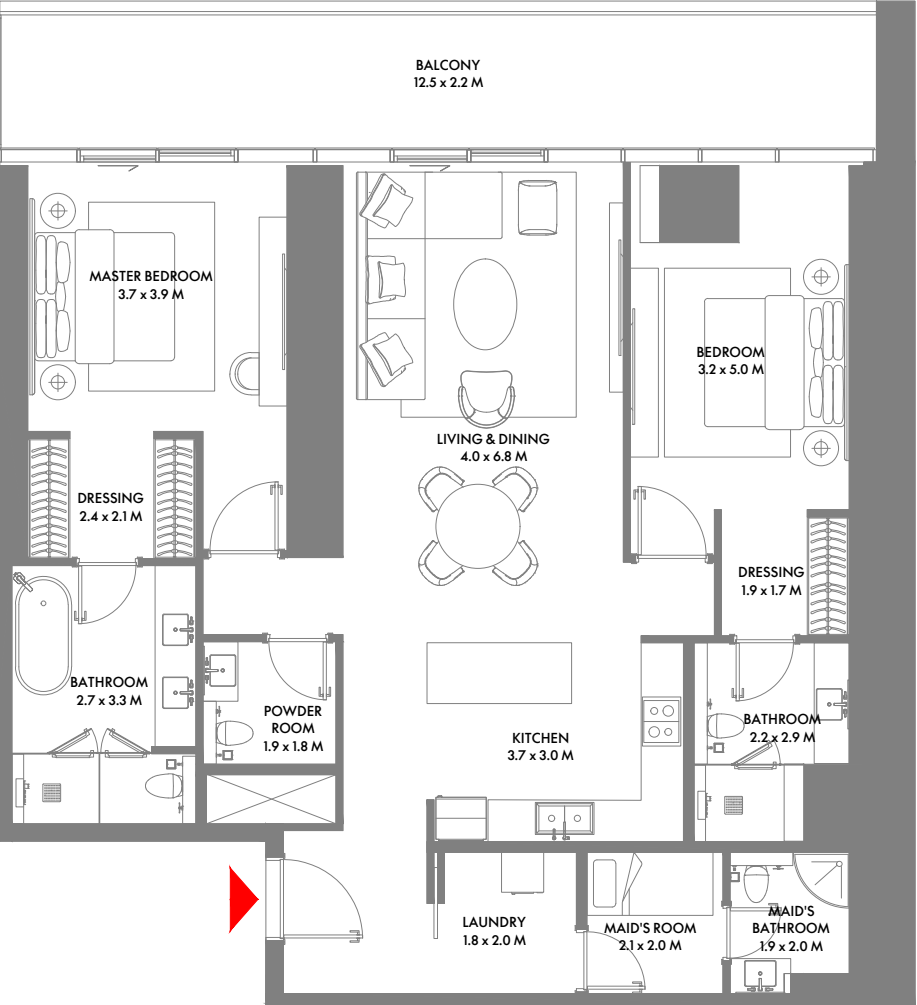


8TH & 14TH FLOOR

2 Bedroom E

Unit Area: 177.66 Sqm (1,913 Sqft) | Balcony Area: 32.45 Sqm (350 Sqft) | Total Area: 210.11 Sqm (2,263 Sqft)

1-Measurements are indicative 'finish to finish' in Metric & Imperial excluding construction tolerance. 2-Plot/unit dimensions may vary from brochure, and unit types/plans may exist as mirrored versions; 3-All images used are for illustrative purposes only. 4-Unless stated otherwise, all fittings and interior decorative items shown are for illustrative purposes only. 5-The developer reserves the right to make alterations, at its absolute discretion, without any liability whatsoever up to the final 'as built' status.



4TH FLOOR

2 Bedroom F

Unit Area: 137.12 Sqm (1,476 Sqft) | Balcony Area: 25.51 Sqm (275 Sqft) | Total Area: 162.63 Sqm (1,751 Sqft)

1-Measurements are indicative 'finish to finish' in Metric & Imperial excluding construction tolerance. 2-Plot/unit dimensions may vary from brochure, and unit types/plans may exist as mirrored versions; 3-All images used are for illustrative purposes only. 4-Unless stated otherwise, all fittings and interior decorative items shown are for illustrative purposes only. 5-The developer reserves the right to make alterations, at its absolute discretion, without any liability whatsoever up to the final 'as built' status.