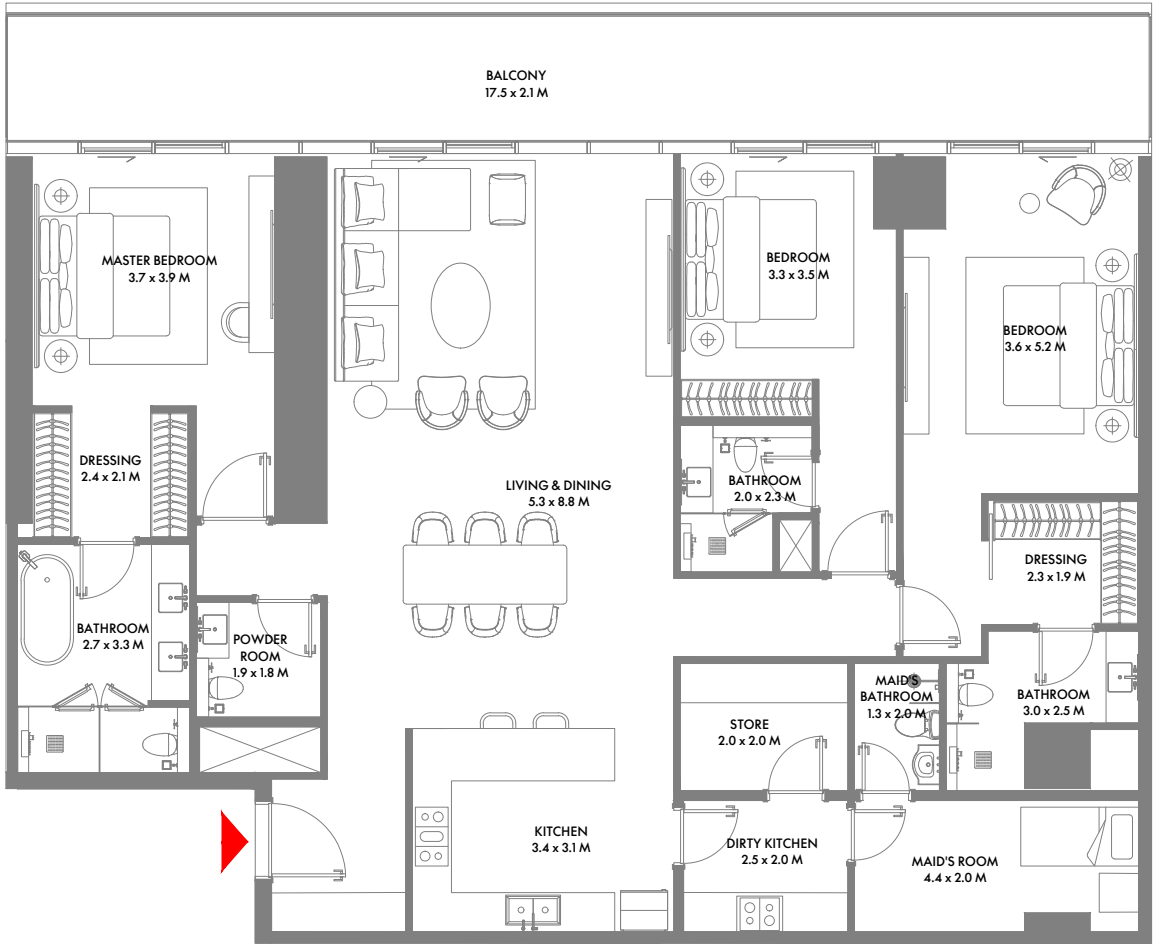


9TH TO 12TH FLOOR

### 3 Bedroom A

Unit Area: 145.30 Sqm (1,565 Sqft) | Balcony Area: 37.28 Sqm (402 Sqft) | Total Area: 182.58 Sqm (1,967 Sqft)

1-Measurements are indicative 'finish to finish' in Metric & Imperial excluding construction tolerance. 2-Plot/unit dimensions may vary from brochure, and unit types/plans may exist as mirrored versions; 3-All images used are for illustrative purposes only. 4-Unless stated otherwise, all fittings and interior decorative items shown are for illustrative purposes only. 5-The developer reserves the right to make alterations, at its absolute discretion, without any liability whatsoever up to the final 'as built' status.

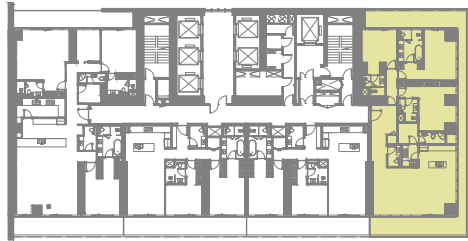


9TH & 10TH FLOOR

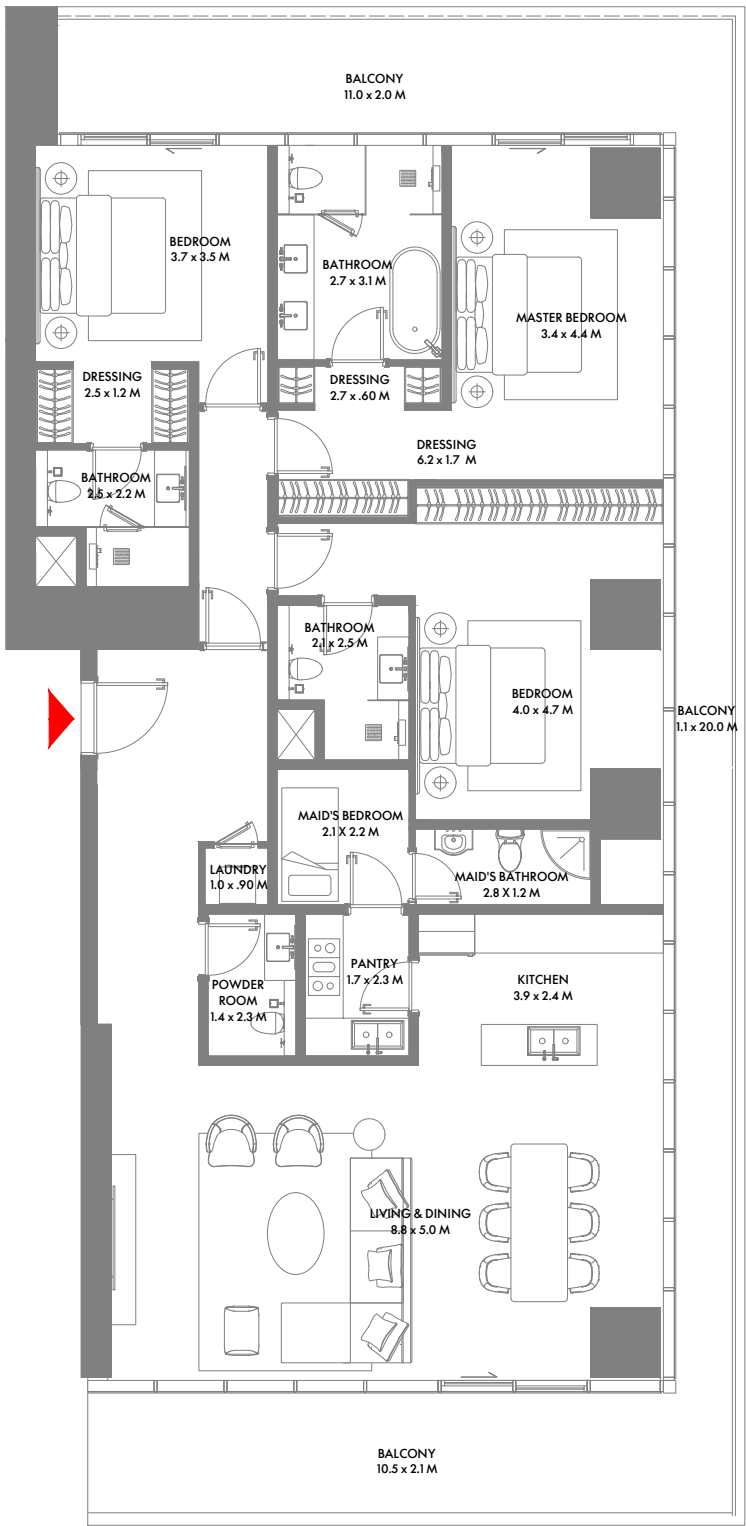
### 3 Bedroom B

Unit Area: 199.51 Sqm (2,148 Sqft) | Balcony Area: 35.57 Sqm (383 Sqft) | Total Area: 235.08 Sqm (2,531 Sqft)

1-Measurements are indicative 'finish to finish' in Metric & Imperial excluding construction tolerance. 2-Plot/unit dimensions may vary from brochure, and unit types/plans may exist as mirrored versions; 3-All images used are for illustrative purposes only. 4-Unless stated otherwise, all fittings and interior decorative items shown are for illustrative purposes only. 5-The developer reserves the right to make alterations, at its absolute discretion, without any liability whatsoever up to the final 'as built' status.



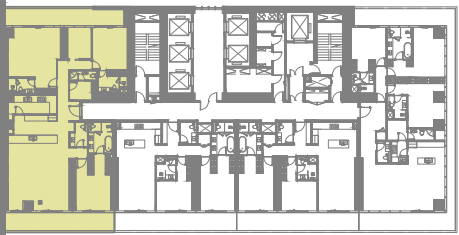
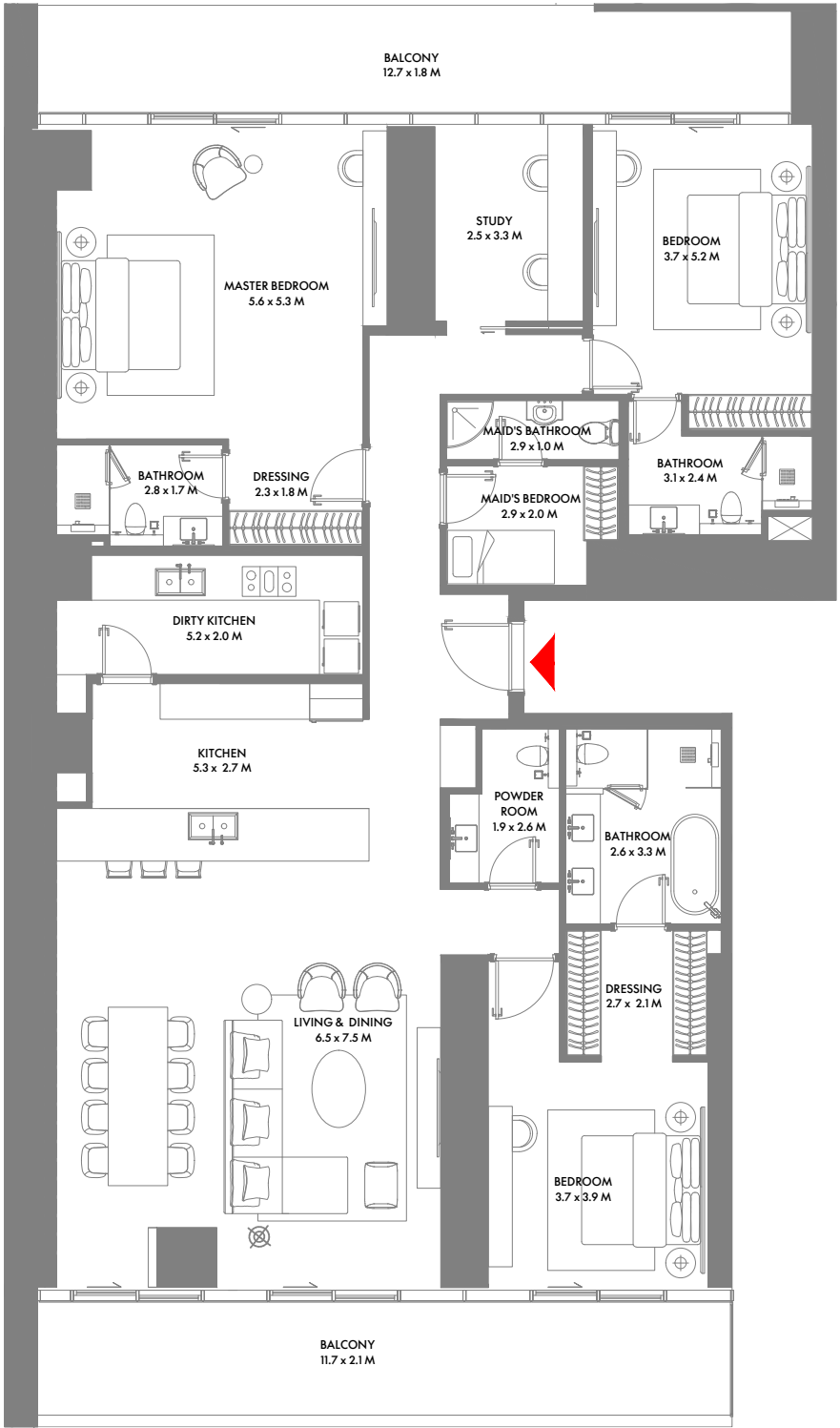
14TH TO 27TH FLOOR



### 3 Bedroom C

Unit Area: 190.83 Sqm (2,055 Sqft) | Balcony Area: 64.02 Sqm (690 Sqft) | Total Area: 254.85 Sqm (2,745 Sqft)

1-Measurements are indicative 'finish to finish' in Metric & Imperial excluding construction tolerance. 2-Plot/unit dimensions may vary from brochure, and unit types/plans may exist as mirrored versions; 3-All images used are for illustrative purposes only. 4-Unless stated otherwise, all fittings and interior decorative items shown are for illustrative purposes only. 5-The developer reserves the right to make alterations, at its absolute discretion, without any liability whatsoever up to the final 'as built' status.

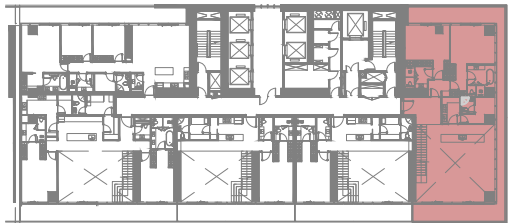
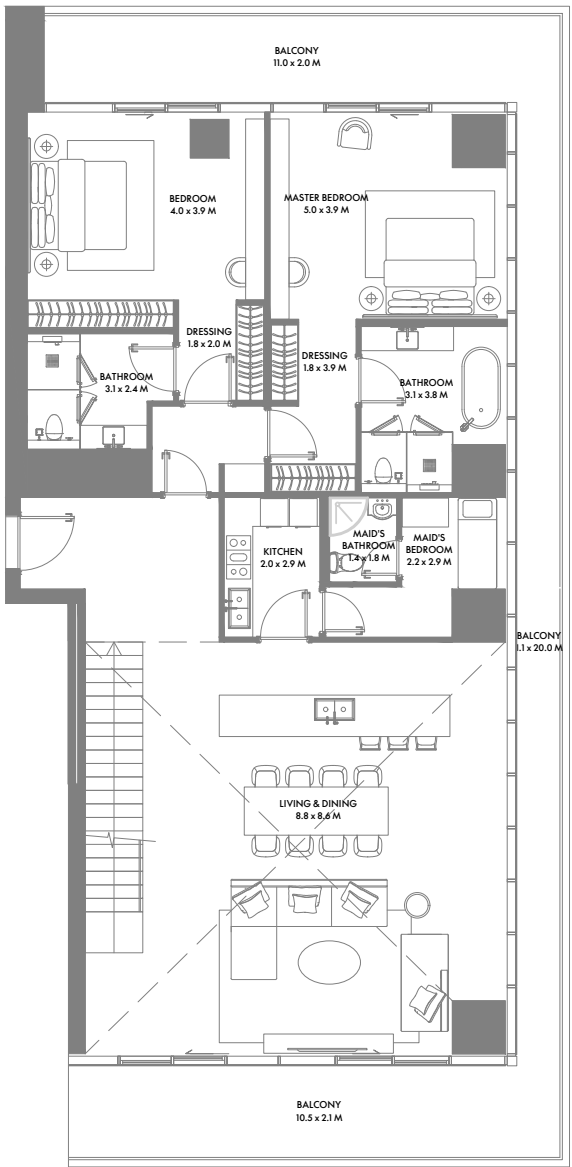


23RD TO 27TH FLOOR

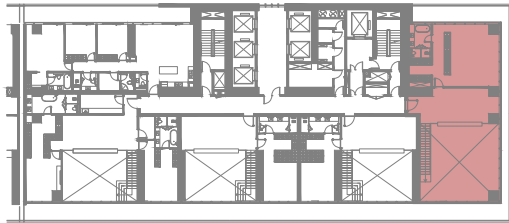
### 3 Bedroom D

Unit Area: 229.96 Sqm (2,476 Sqft) | Balcony Area: 49.66 Sqm (535 Sqft) | Total Area: 279.62 Sqm (3,011 Sqft)

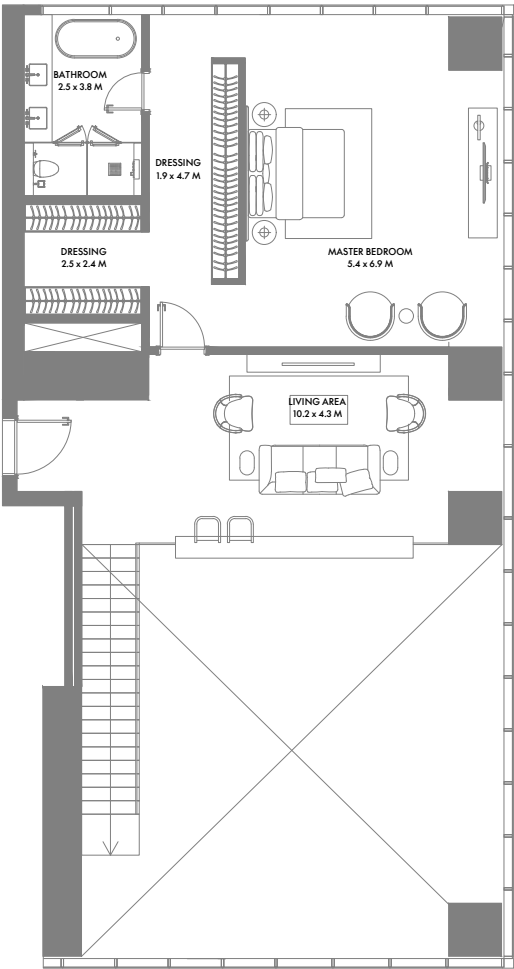
1-Measurements are indicative 'finish to finish' in Metric & Imperial excluding construction tolerance. 2-Plot/unit dimensions may vary from brochure, and unit types/plans may exist as mirrored versions; 3-All images used are for illustrative purposes only. 4-Unless stated otherwise, all fittings and interior decorative items shown are for illustrative purposes only. 5-The developer reserves the right to make alterations, at its absolute discretion, without any liability whatsoever up to the final 'as built' status.



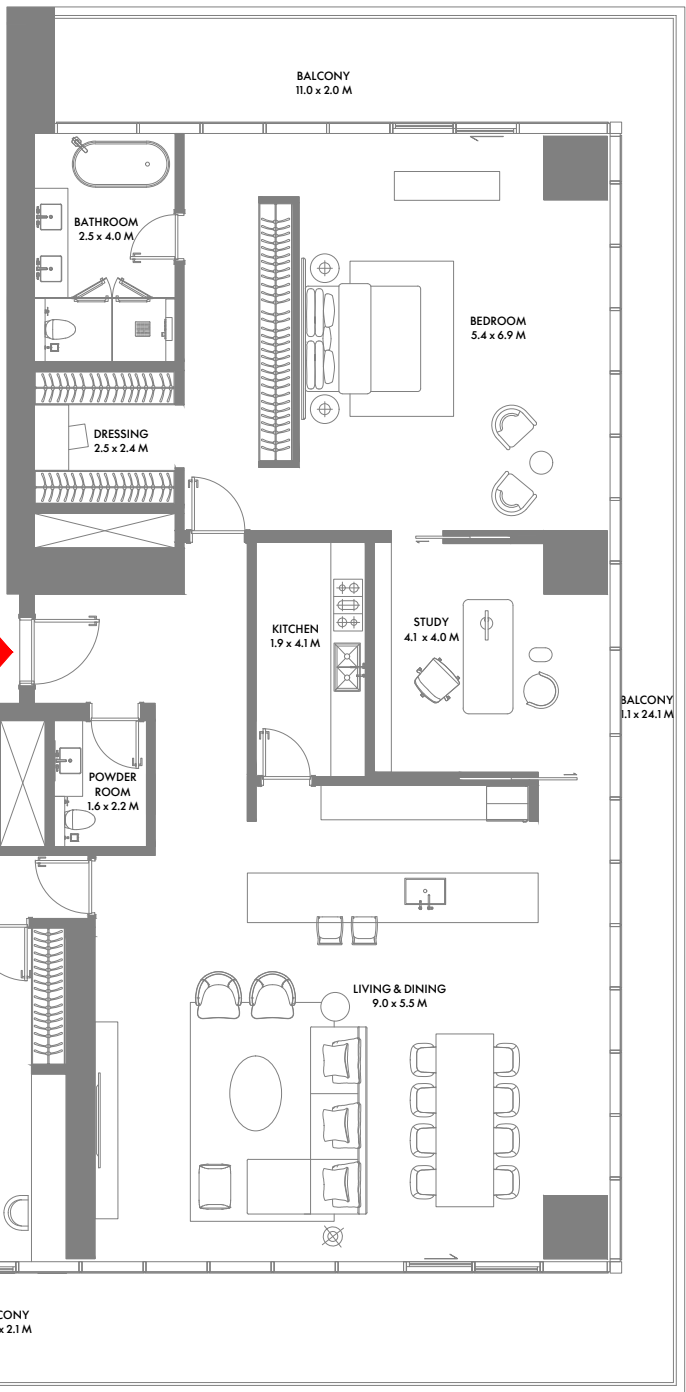
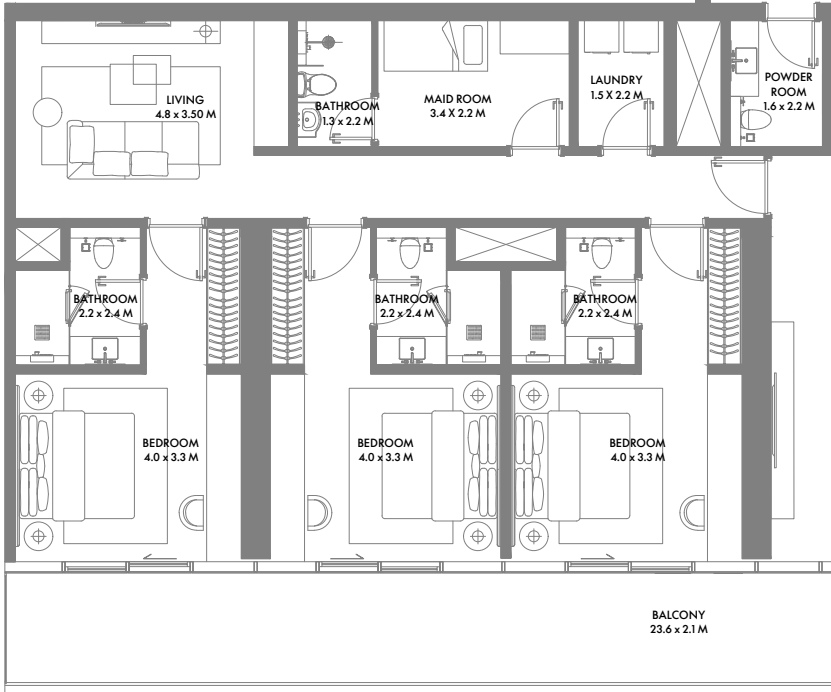
11TH FLOOR



12TH FLOOR



29TH TO 31ST & 33RD TO 36TH



### 3 Bedroom Duplex A

Unit Area: 385.67 Sqm (4,152 Sqft) | Balcony Area: 64.03 Sqm (690 Sqft) | Total Area: 449.70 Sqm (4,842 Sqft)

1-Measurements are indicative 'finish to finish' in Metric & Imperial excluding construction tolerance. 2-Plot/unit dimensions may vary from brochure, and unit types/plans may exist as mirrored versions; 3-All images used are for illustrative purposes only. 4-Unless stated otherwise, all fittings and interior decorative items shown are for illustrative purposes only. 5-The developer reserves the right to make alterations, at its absolute discretion, without any liability whatsoever up to the final 'as built' status.

### 4 Bedroom A

Unit Area: 313.86 Sqm (3,379 Sqft) | Balcony Area: 90.53 Sqm (975 Sqft) | Total Area: 404.39 Sqm (4,354 Sqft)

1-Measurements are indicative 'finish to finish' in Metric & Imperial excluding construction tolerance. 2-Plot/unit dimensions may vary from brochure, and unit types/plans may exist as mirrored versions; 3-All images used are for illustrative purposes only. 4-Unless stated otherwise, all fittings and interior decorative items shown are for illustrative purposes only. 5-The developer reserves the right to make alterations, at its absolute discretion, without any liability whatsoever up to the final 'as built' status.